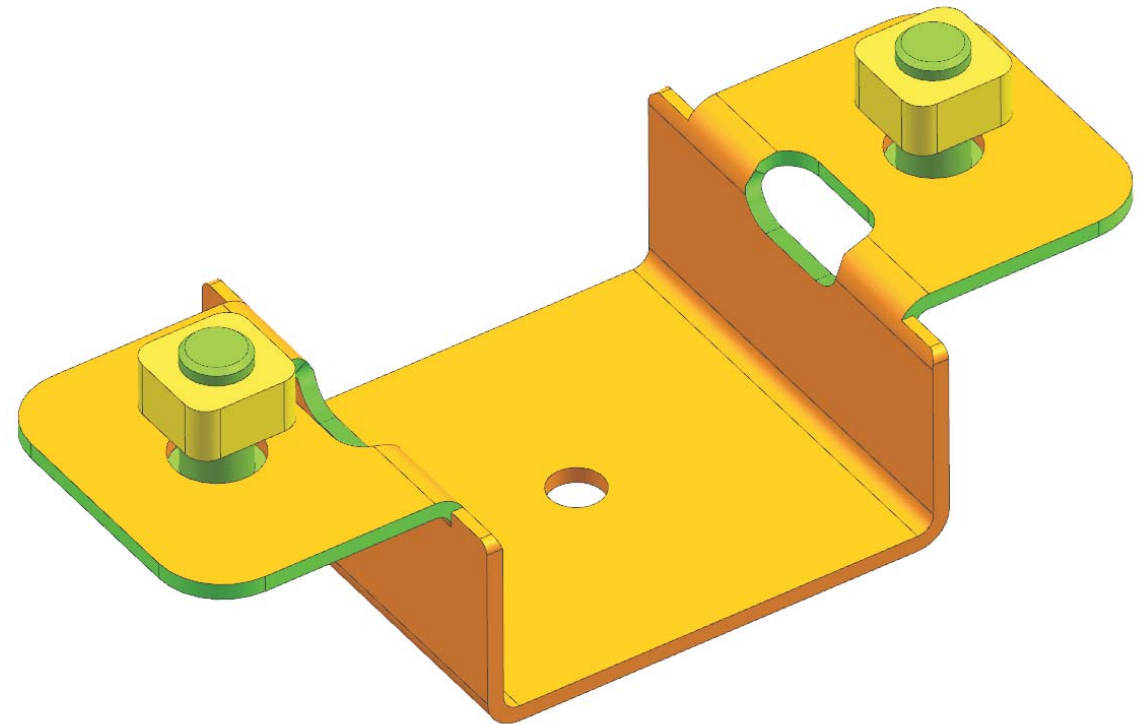
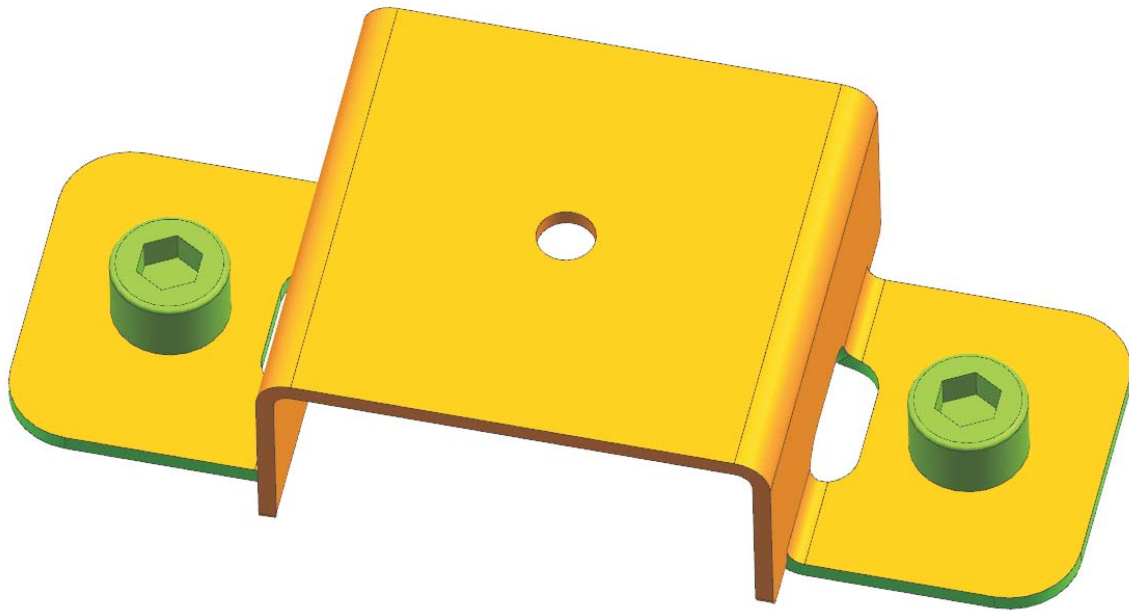


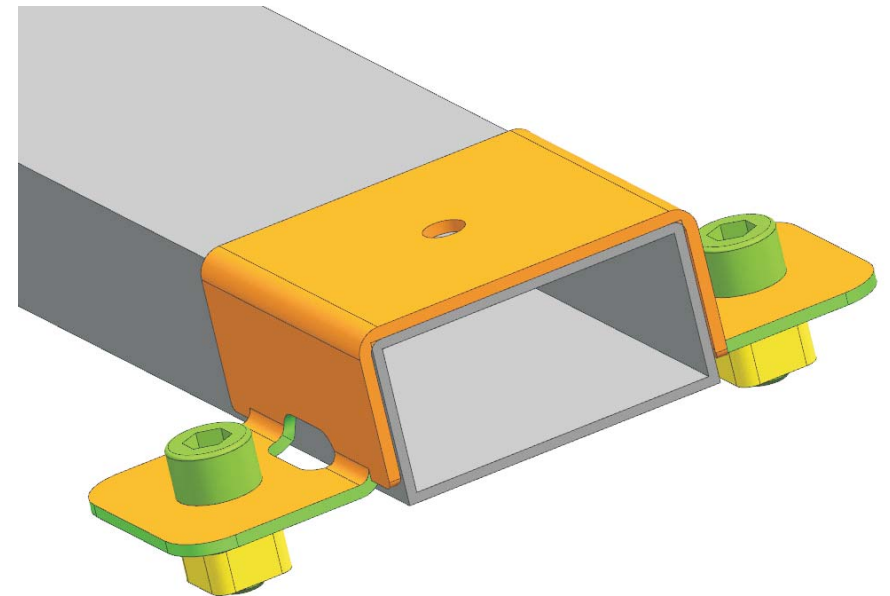
As shown in the figure,
fix the M6 screws and
nuts into the angle iron

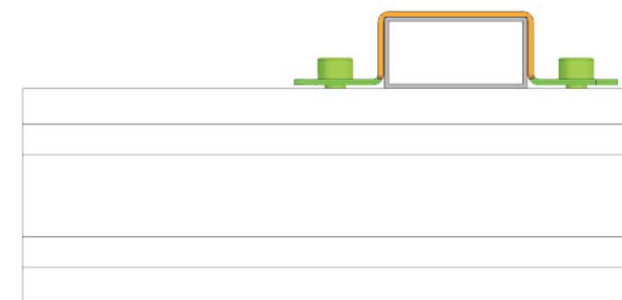
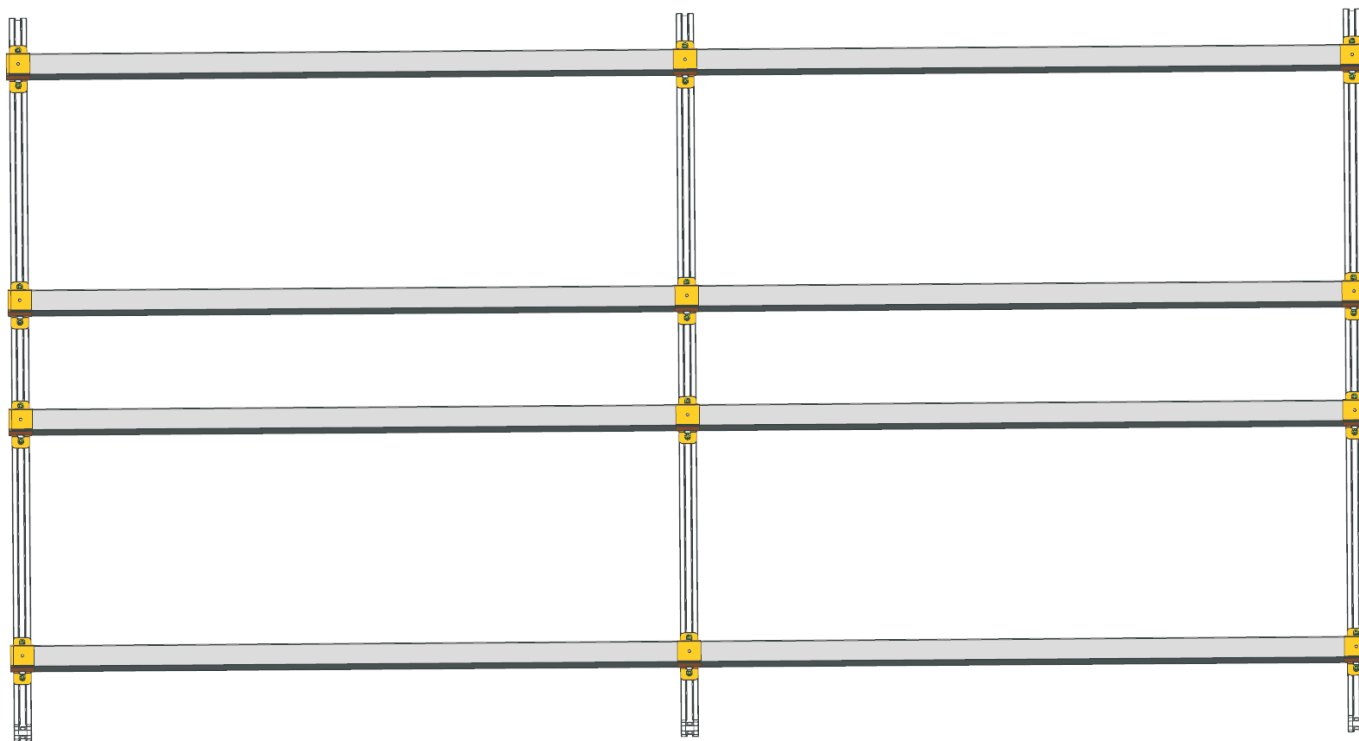


As shown in the figure, fix
the M6 screws and nuts to
the connector

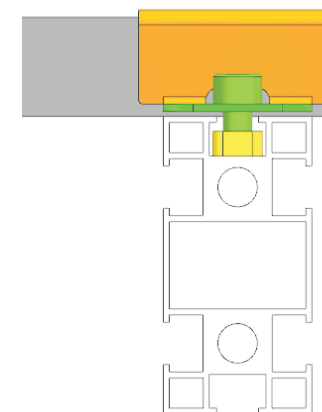
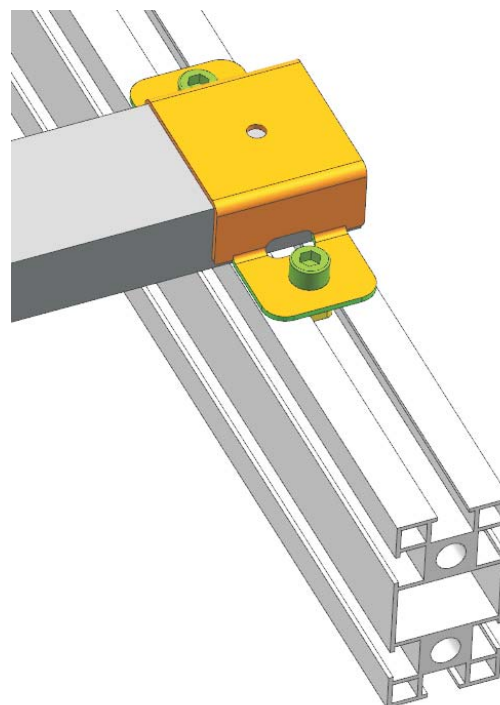


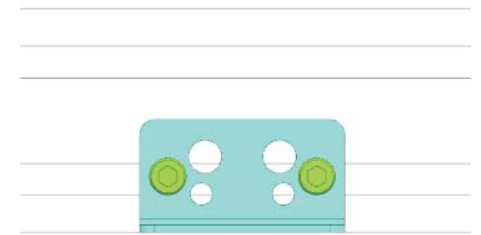
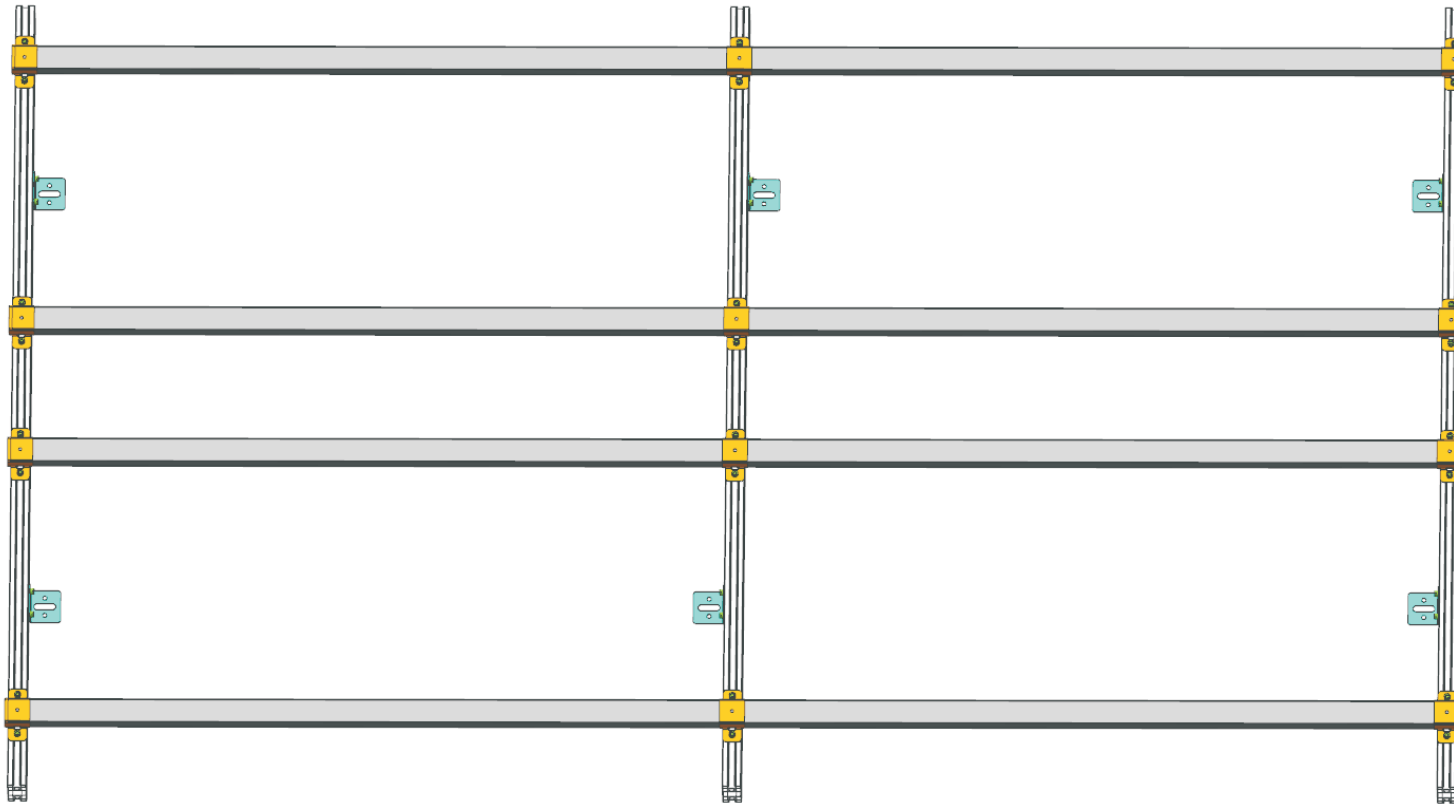
As shown in the figure,
fix the connector with
screws fixed to the
bracket according to the
drawing position



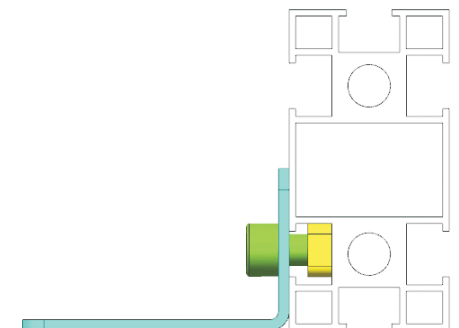
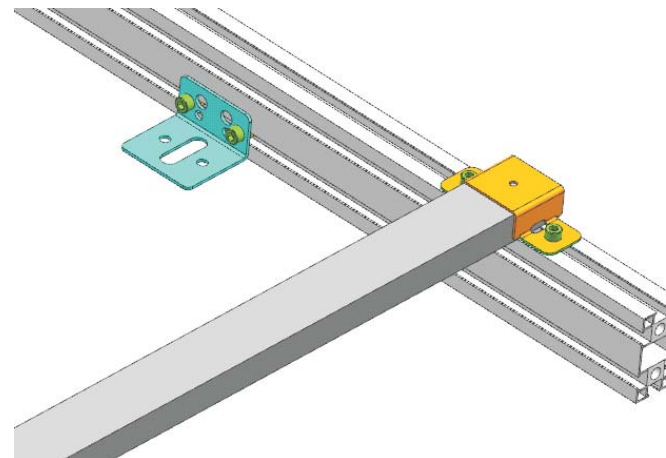


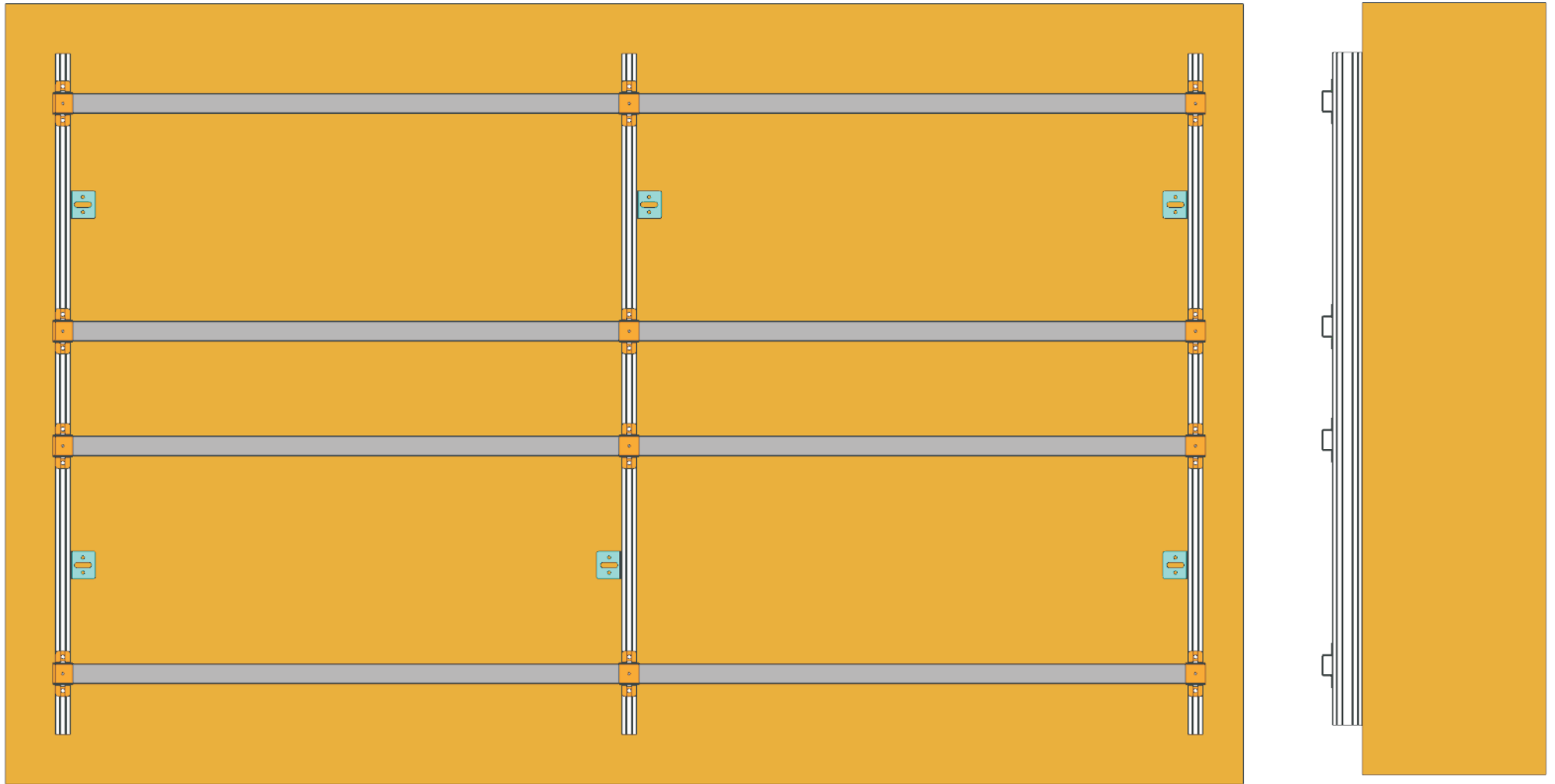
Slide the bracket with the connector fixed along the groove of the other length of the bracket to the specified position, and tighten the screw with a wrench





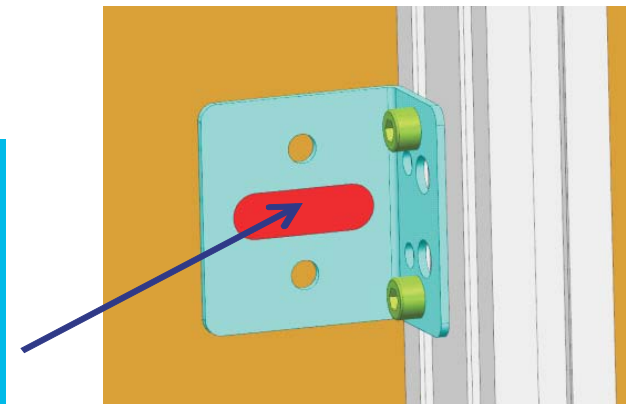
Move the angle iron with the screws fixed along the groove of the bracket to the designated position and tighten the screws

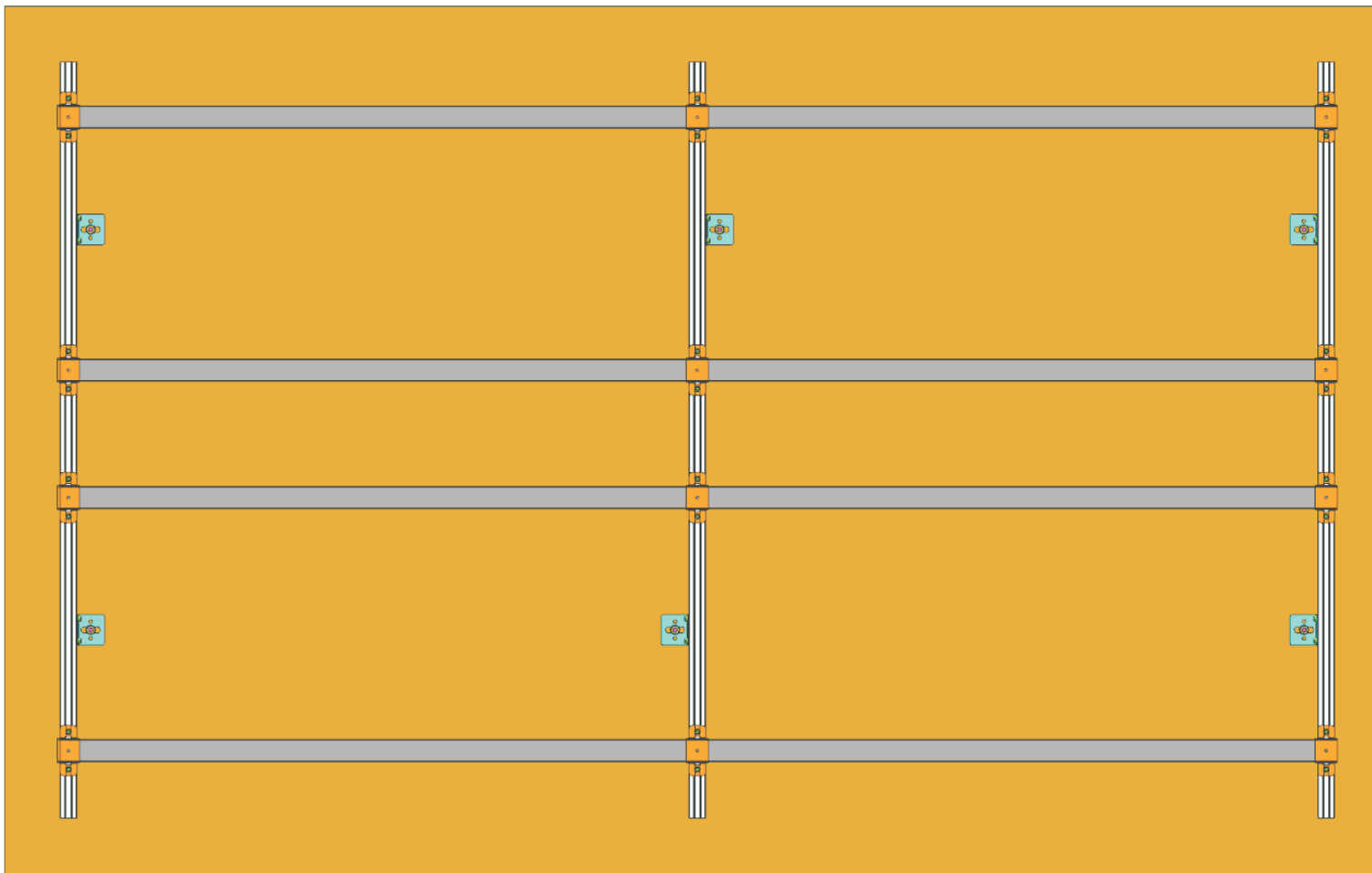




Attach the assembled bracket to the wall to be installed, mark the angle iron position and drill holes

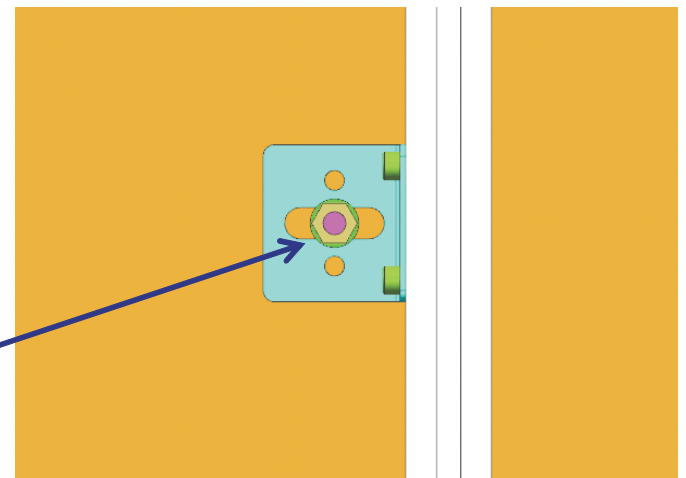
Fix the expansion screws at the red position

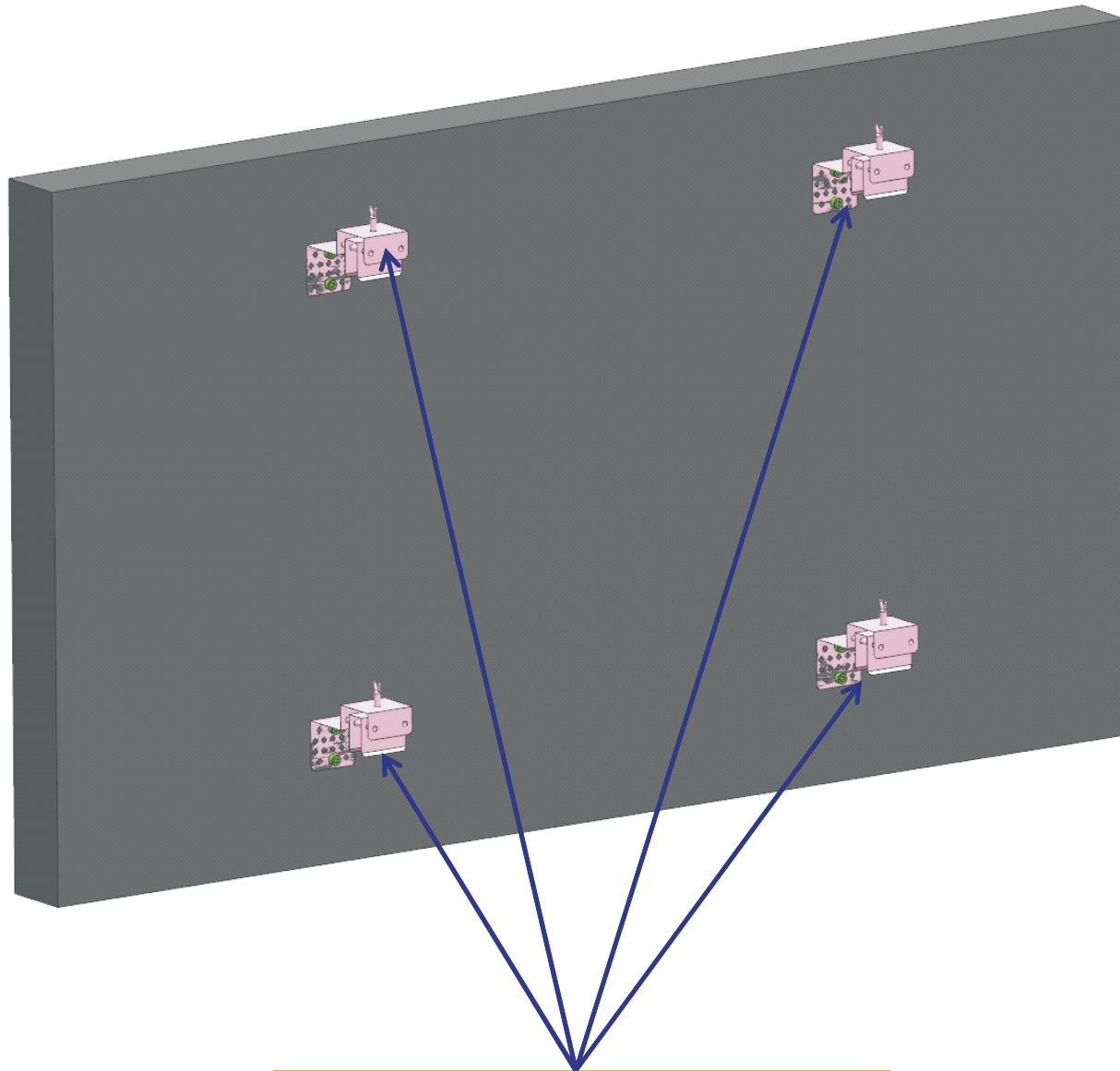




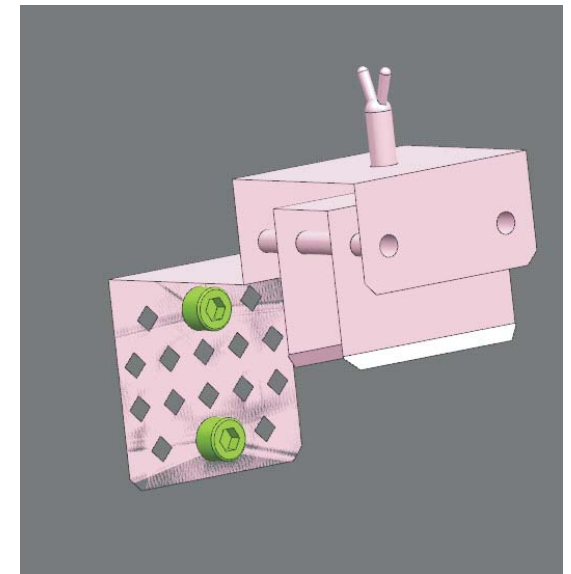
Stick the assembled bracket to the wall, drive the expansion screws into the wall, and tighten the expansion screws with a wrench

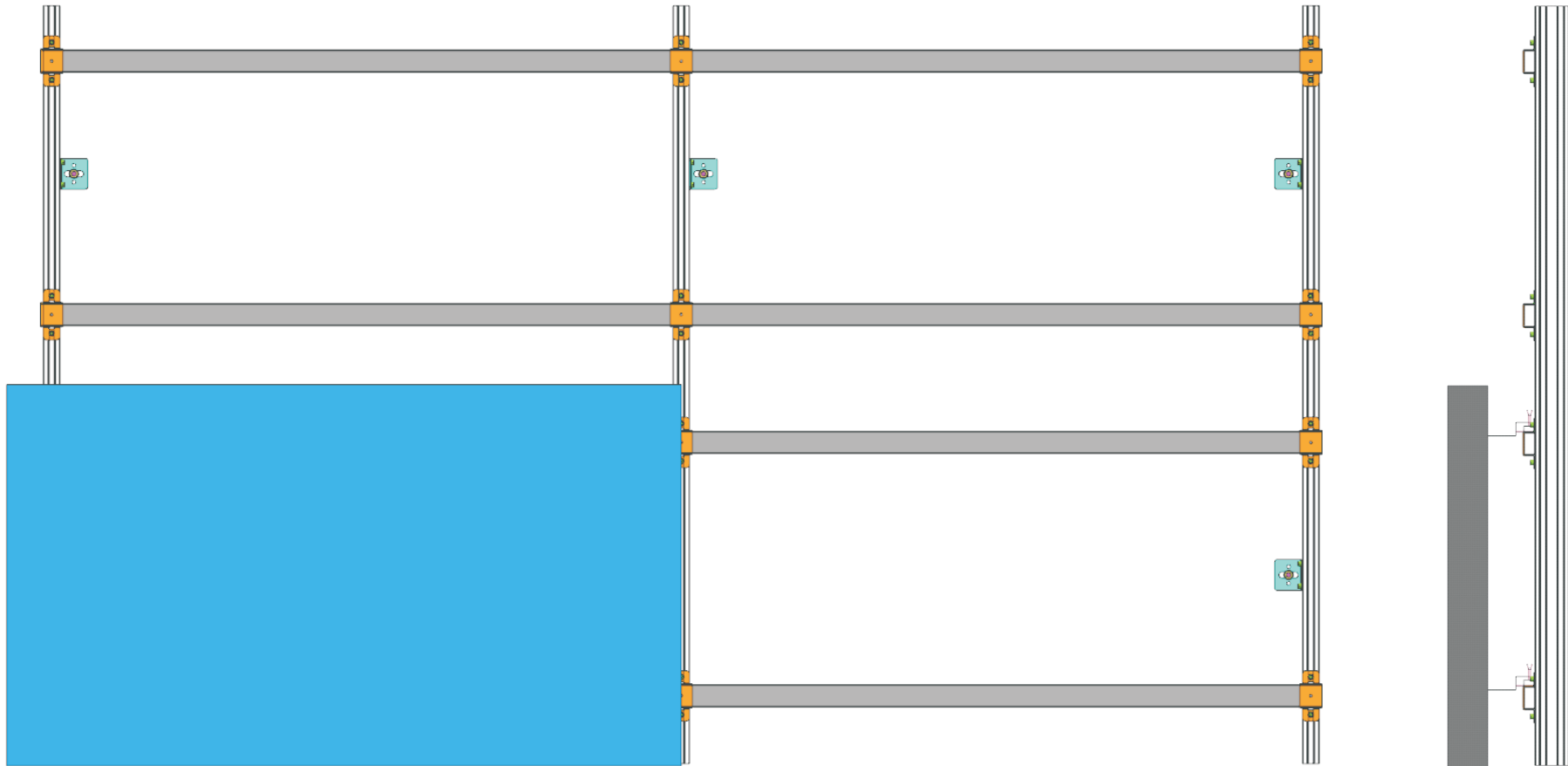
Tighten the expansion screws



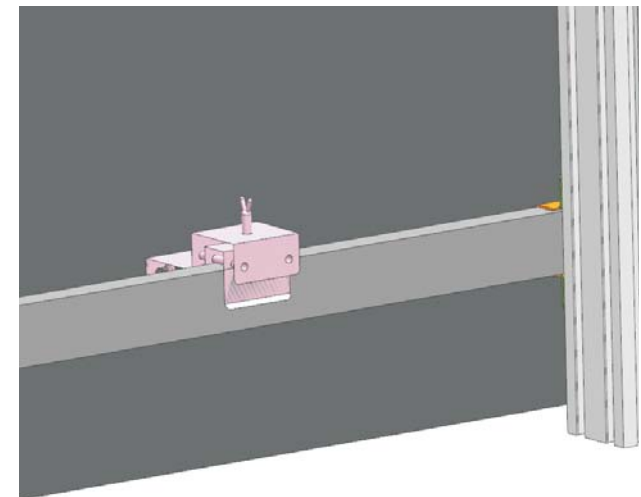


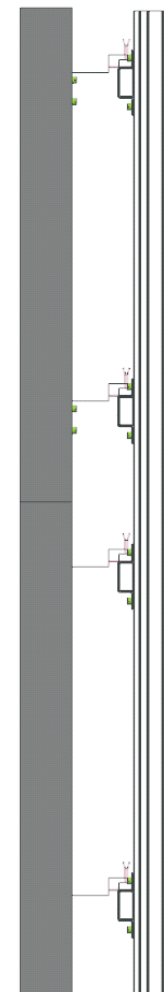
Use screws to fix the hooks at the designated positions behind the screen (4 hooks per screen)





Connect the necessary cables,
then arrange the screens from
bottom to top, and use the
adjustment screws on the hooks
to adjust the screens to the
correct position





After all screen positions
are adjusted, you can
connect the signal